

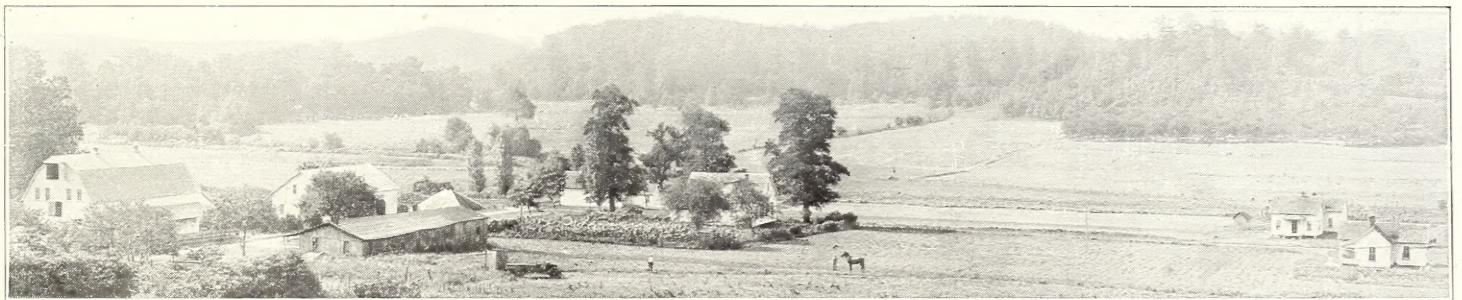
Historic, Archive Document

Do not assume content reflects current scientific knowledge, policies, or practices.



Two views of Dutch Creek Valley (The Nile of America's Egypt) and Thomasville where the world's famous fruit producing Strawberry Plants are grown

THOMAS PURE BRED STRAWBERRY PLANTS



OUR CAREFUL AND EXPERT PACKING INSURES SAFE DELIVERY

We welcome the small orders, same are carefully looked after and packed in neat bundles as shown, which assures your getting your plants in good condition. We take all the risk as we guarantee our plants to reach you in good condition if notified immediately on receipt of same. We cannot govern your growing conditions, therefore we cannot guarantee the crop, and while we exercise the greatest of care to keep our plants

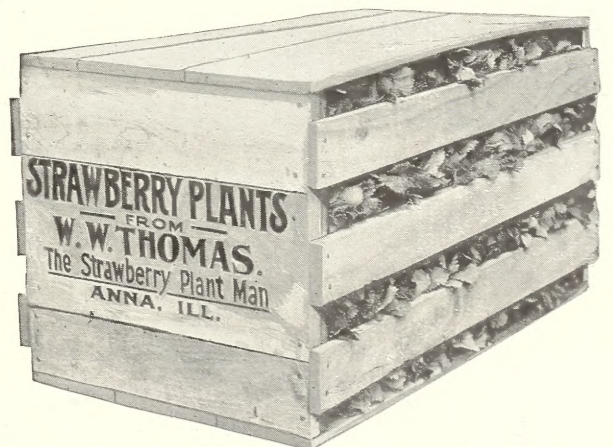
pure and true to name and will replace on proof all stock not true to name we will not be further liable.



On large orders and for orders to Florida, Texas, California and foreign countries we pack our plants in crates (as illustrated below.) Most of our plants are shipped in baskets. They are lighter, saves postage and express, also the bud is opened to the air more than when plants are shipped in crates.



THOMAS
PURE BRED
PLANTS
PRODUCE
FRUIT



Missionary, Klondyke, Lady Corneille, Dunlap, Aroma and Gandy

The Big Six of the Strawberry World

The strawberries of these varieties as produced from plants of W. W. Thomas, the Strawberry Plant Man, Anna, Ill., reigns supreme in the section of the country adapted to their growth. They are from plants selected and bred up to produce great and profitable crops of strawberries.

MISSIONARY—S—(Early)—A new early variety from the South, that has been giving the best results wherever tried, especially in Florida, and the Missionary is that fine berry which appears on the Northern market in January. One of the best up-to-date strawberries of the hour. It is a clean, healthy plant and succeeds well anywhere. It is a perfect blooming variety and heavy bearer, good shipper, fine flavor, excellent quality and ripens earlier than the Klondyke and with the Excelsior. The plant is very hardy and an excellent grower.

KLONDYKE—S—(Medium)—The Klondyke is still the most popular of all Southern varieties because of its ability to produce dollars for the Southern grower. Its especially fine quality, appearance and good shipping qualities give it this ability. I consider the Klondyke one of the best Southern varieties and would advise planting it in preference to all others where one variety only is to be used excepting perhaps in some localities. It is a very showy berry, therefore creates a good impression on first appearance. In quality it is excelled by none. Its unusual firmness makes it a most excellent shipper, uniform in size from one end of the season to the other. Foliage heavy, dark green, rustless and rank, long stems, but the heavy foliage protects the blossoms from possible frost, and other varieties have been known to frost kill right alongside. This is one feature of critical importance to a grower, whether he is a large grower or just a home grower; certainly a home grower should not take chances on planting a variety that frost kills easily.

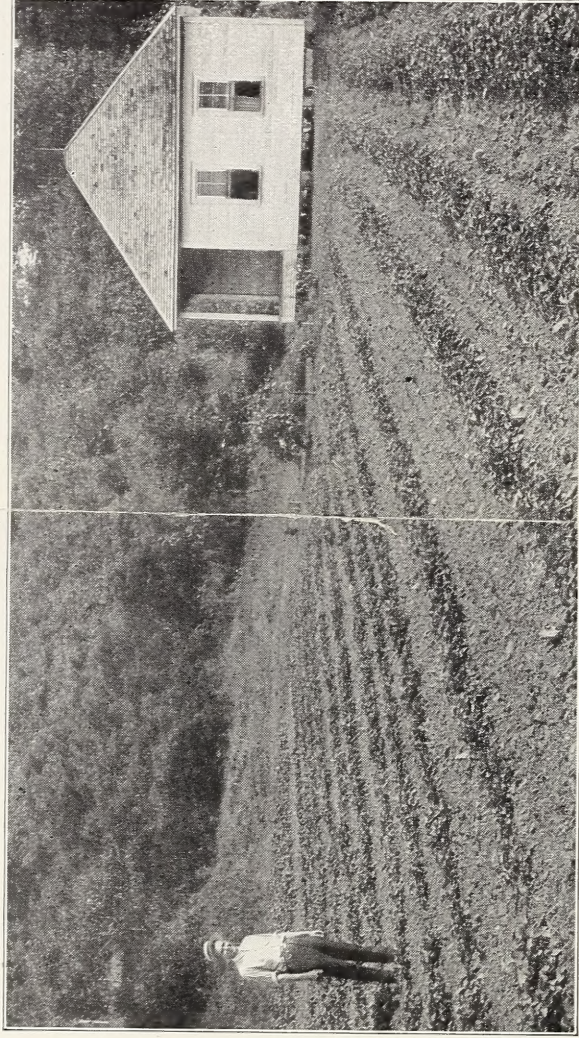
SENATOR DUNLAP—S—(Medium)—This variety has done so well that it will be years before many growers will plant any other variety. It is a heavy yielder, splendid quality, and sells for the highest price. It is a country-wide producer and is so recommended. The plants have enough health to get through on average show can be absolutely depended upon. In shape, in color, and in period of ripening, yet is not liable to be injured by continued rainy season. A good pollinizer. Any observing grower will detect more favorable points about this berry than is given in this description. It is not only a splendid market berry, but one of the best for home use, having no superior as a canning berry. Every Northern grower should put Senator Dunlap first on their list and then add such other varieties as may be wanted, but make the main part of your planting of this variety either for market or home use, and if you are going to plant only one variety plant this one.

LADY CORNEILLE—S—(Medium)—This wonderful strawberry has more good qualities than ever before combined in any one berry. It is destined to become the leading strawberry both North and South, East and West. That is saying a great deal, but it is not saying too much, for it merits it. There are so many good things to say about the Lady Corneille that it seems almost flattery to mention them all. The Lady Corneille is the healthiest, thriftiest, best growing plant with clean foliage, absolutely free of rust or leaf spot; plants large, strong, and robust, with large roots that grow deep in the ground. The plant is simply a beauty

glossy, rich green leaves, stands drought better than any other strawberry and thrives in both clay and loamy soil, makes runners freely and grows to perfection under both matted row, or hill culture. The Lady Corneille ripens same time as the Klondyke and Senator Dunlap, but continues in bearing much longer. The berries are supported on heavy, stocky fruit stems and every one matures into a perfect berry. The blooms are rich in pollen, calyx large and heavy and remains green, giving a beautiful appearance to the fruit. Berries large, rich, glossy red, slightly long, some wedge shaped, with bright golden seeds which add to their beauty. Quality the best of all berries, having the true Strawberry flavor, rich, sweet and delicious.

AROMA—S—(Late)—Among the best of the late ripening varieties. In comparison with the Gandy, it will be found that it commences to ripen a little earlier and will continue to the end of Gandy's season and is similar to it in size and productiveness. It is planted extensively both North and South. Quality the best of any, comes nearer being the true strawberry flavor than all others. It is the best for eating from the vines, with cream, shortcake, preserved or canned. Its shipping qualities are of the best. There is no other variety that will stand shipping better or longer distances. Berry firm, solid and not easily bruised. Color is the best of any variety clean, healthy and very attractive; size large to very large and uniform. This is the one variety that comes nearer being suited to all localities than any other variety grown, as it flourishes and does well in the North and in the South. It is especially adapted to that section of the country where the North and South meet. For several hundred miles both north and south of the Mason and Dixon's line it flourishes to such an extent that many growers have discarded all other varieties and grow the Aroma exclusively. By growing this variety you will have berries that always sell for the best market price.

GANDY—S—(Late)—The Gandy comes as near standing alone as a superior berry for the late market as any grown. It has more than ordinary firmness, and as a shipper it certainly has no superior. Plants are strong, healthy and good growers. Its color is bright red, smooth surface, dark red seeds, and of delicious flavor. If a soil were to be recommended a heavy clay or bottom land would be suggested. Will keep in good condition on the vine after ripening longer than most any other variety. It does best when some other later variety is planted with it. The Aroma is recommended for this.



Manager Robert E. Blaylock, in corner of Breeding Bed. Note the growth of plants. (Picture taken in June), also note one of the smaller of ten tenant houses on plant farm in which we house our permanent and experienced help. Our employees live right in the strawberry fields, so to speak, ever ready to give our plant fields the care and attention to make them the world famous fruit producing plants they are.

Half a chance, and where they have an opportunity, the Warfield berry itself resembles the Warfield. It belongs to the drought resisting class, weather during the picking season. It has an unusually long blooming season. Any observing grower will detect more favorable points about this berry than is given in this description. It is not only a splendid market berry, but one of the best for home use, having no superior as a canning berry. Every Northern grower should put Senator Dunlap first on their list and then add such other varieties as may be wanted, but make the main part of your planting of this variety either for market or home use, and if you are going to plant only one variety plant this one.

Home Gardener or Market Grower will profit by using the plants of above varieties adapted for their section of country and as grown by W. W. THOMAS (The Strawberry Plant Man) ANNA, ILLINOIS